



Left-to-right: Gondola to Mt Pilatus © Luzern Tourism ; Engelberg; Mt Titlis Rotair Revolving gondola.

DAY TOURS FROM LUCERNE

Sightseeing options departing from Lucerne

For more detailed information visit www.holidaysonlocation.com

JUNGFRAUJOCH - TOP OF EUROPE - DEPARTS LUCERNE

Take an alpine tour to the world of the Jungfrauoch - Top of Europe at 3454 m. A scenic coach-tour takes you to the magnificent mountain world of the Bernese Oberland. After a short interlude in Interlaken, arrive at Lauterbrunnen to board the cogwheel train for a mountain train trip via Kleine Scheidegg at the foot of the famous Eiger North Face to Jungfrauoch - Europe's highest railway station! Enjoy the world of eternal snow and ice. Visit the Ice Palace, experience the breathtaking panorama view from the Sphinx Observation Terrace overlooking the Aletsch Glacier (Europe's longest glacier) and the snow-capped peaks of the neighbouring countries. The down-hill mountain trip takes you to Grindelwald where your coach awaits for your return to Lucerne.

Jungfrauoch - Top of Europe: Prices From	Adult	Child
Duration: 9½ hours	370	185

Departs Lucerne 8:30 am Wed-Sun Apr, Oct, Nov. Daily May-Sep. Fri-Sun Dec-Mar.



INTERLAKEN - GRINDELWALD

This guided coach-tour takes you on scenic routes to Interlaken at the foot of the snow-covered Alps of the Bernese Oberland. After some time at leisure in Interlaken, the coach takes you to the well-known holiday resort of Grindelwald, which is referred to as the 'Glacier Village'. Time to explore this region on-your-own. An optional cable car ride (operates only 29 May - 24 Oct 2018) to the sunny terrace of 'Mt. First' at 2,168m is recommended for a breathtaking panorama of the Bernese Alps. Return to Lucerne late afternoon.

Interlaken - Grindelwald: Prices From	Adult	Child
Duration: 9½ hours	133	66

Departs Lucerne 9:30 am

MOUNT TITLIS GLACIER PARADISE

An adventure excursion to the highest vantage point in Central Switzerland. A ride in a deluxe motor-coach takes you to the mountain resort of Engelberg. Board the aerial cableway for a 45-minute journey from the green valley bottom to the high alpine glacier region at 3020m/10000ft which guarantees snow the whole year round. Enjoy a magnificent ride in the world's first-ever revolving 'ROTAIR' gondola, which offers a 360° panoramic view of the Alps. Visit the Ice Grotto and experience the 'Ice Flyer' - chair lift ride over the glacier with fantastic views into crevasses and ice falls. After the descent to Engelberg, board your coach and return to Lucerne.

Mount Titlis - Glacier Paradise: Prices From	Adult	Child
Duration: 5½ hours	196	98

Departs Lucerne, daily 11:15 am except Except 5-16 Nov 2018

EIGER - JUNGFRAU GLACIER PANORAMA VIEW

This excursion starts with a comfortable ride in a modern deluxe coach through the scenic routes to the alpine world of the Bernese Oberland. After a short interlude in Interlaken you reach Lauterbrunnen where you board the Wengernalp rack railway for a 45-minute trip up through alpine meadows and forests to the village of Wengen, and then further on up to Kleine Scheidegg (2061 m / 6762 ft). Here you will find yourself in front of the most magnificent mountain backdrop of the Eiger, Mönch and Jungfrau Mountains. Time for lunch, relax or do some hiking on the well-signed hiking trails for all levels of competence. The unaccompanied trip back down to the valley follows the north-west slopes of the Eiger to the famous resort of Grindelwald. Return by coach and guide to Lucerne - arrival at approx. 7 p.m.

Eiger - Jungfrau Glacier Panorama View: Prices From	Adult	Child
Duration: 9½ hours	196	98

Departs Lucerne daily 9.30am

ENGELBERG EXPERIENCE: MT TITLIS RESORT

5 Days / 4 Nights Holiday Apartment Stay



© Engelberg-Titlis Tourismus AG

Engelberg is an alpine town in central Switzerland. In the center is Kloster Engelberg, a 12th-century monastery. Trails weave up Mt. Titlis, and ski runs zigzag down, while revolving Titlis Rotair gondola lift leads to the summit, Titlis Cliff Walk suspension bridge and a glacial park. Trübsee, a glacial lake, lies nearby.

Engelberg is 1 hour 50 minutes by train from Zurich (via Lucerne) and 43 minutes from Lucerne.

The Mt Titlis Resort holiday apartments in Engelberg offer plenty of space in which to relax in one, two or three bedroom apartments. The large, bright living area with its open-plan kitchen is perfect for evening get-togethers with friends and family.

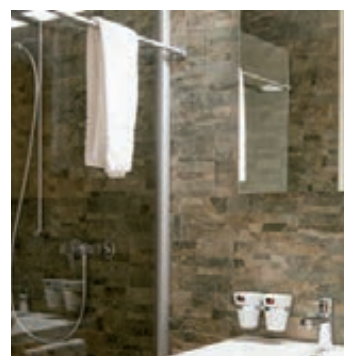
From the balcony or patio, you can enjoy sweeping views of Engelberg, Titlis and the surrounding mountain landscape. The apartments are all very-well equipped. Free WLAN is available in all apartments and buildings in the Titlis Resort.

Price Includes

- ✦ 4 nights accommodation in your choice of Studio, 1-bedroom or 2-bedroom apartment
- ✦ Cleaning, linen and towels
- ✦ Mt Titlis excursion and Ice Flyer
- ✦ Service Charges & taxes

Prices per person, twin-share from:

Studio Apartment	2 Adults
24 Mar-11 May 2018, 1 Sep-4 Nov 2018	438
3-23 Mar 2018, 12 May - 29 Jun 2018	680
30 Jun - 31 Aug 2018	775
1-Bedroom Apartment	2 Adults
24 Mar-11 May 2018, 1 Sep-4 Nov 2018	814
3-23 Mar 2018, 12 May - 29 Jun 2018	836
30 Jun - 31 Aug 2018	933
2-Bedroom Apartment	2 Adults
24 Mar-11 May 2018, 1 Sep-4 Nov 2018	920
3-23 Mar 2018, 12 May - 29 Jun 2018	972
30 Jun - 31 Aug 2018	1069



Bathroom and Kitchen at the Titlis Resort. All © Engelberg-Titlis Tourismus AG

Prices are per person in Australian Dollars and are subject to currency fluctuation.