



Zurich on the River Limmat © swiss-image.ch



ZURICH

Zurich Region
As a 'metropolis of experiences' by the water, with a magnificent view of the snowcapped Alps on the horizon, Zürich offers a unique mixture of attractions – over 50 museums and more than 100 art galleries, international fashion labels and Zürich designs, and the most-flamboyant and lively nightlife in Switzerland. Recreational activities range from a visit to the riverside and lakeside bathing areas in the very heart of the city, to a spectacular hike on the Uetliberg mountain.

ZURICH

Accommodation options for Zurich

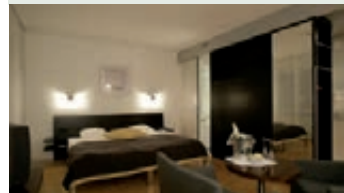
ZURICH APARTMENTS | EMA HOUSE APARTMENTS ★★★



Spacious apartments in a central location, near the train station. Available with kitchenettes and without kitchenettes.

PRICES FROM \$375 1-Bedroom apartment (2 people) per night, low season, min. 2 nights Taxes paid locally.

ZURICH | SORELL HOTEL SEEFELD ★★★★★



The hotel is located in the pleasant district of Seefeld in the heart of Zurich. 64 rooms with private facilities. Wireless internet is available.

PRICES FROM \$165 per person per night, low season, twin share

ZURICH | SORELL HOTEL SEIDENHOF ★★★★★



Located directly adjacent to the Bahnhofstrasse with its diverse shopping possibilities. The hotel offers 84 rooms with shower or bath.

PRICES FROM \$209 per person per night, low season, twin share

- Zurich Hotel Plan:**
1. Ema House Apartments
 2. Seefeld
 3. Seidenhof
 4. Rütli
 5. Comfort Inn Royal
 6. Central Plaza
 7. Glockenhof
 8. B2 Boutique Hotel & Spa
 9. Steigenberger Bellerive au Lac
 10. NH Zurich Airport
 11. Du Theatre
 12. Ambassador
- Day touring pick-up point**
A Sihlquai Bus Terminal



ZURICH | AMBASSADOR ★★★★★



This sophisticated hotel is situated across the street from the Zürich Opera House and one block from the banks of Lake Zürich. The hotel has a casual lobby lounge and an elegant restaurant serving sustainable seafood. It features a rooftop terrace. The airy, traditional rooms are individually decorated and feature free Wi-Fi, flat-screen TVs and Nespresso coffeemakers, plus pillow menus, electronically adjustable beds and minibars. Select rooms and suites add separate living areas, work spaces, and lake or city views.

PRICES FROM \$265 per person per night, low season, twin share

Prices are per person in Australian Dollars and are subject to currency fluctuation.